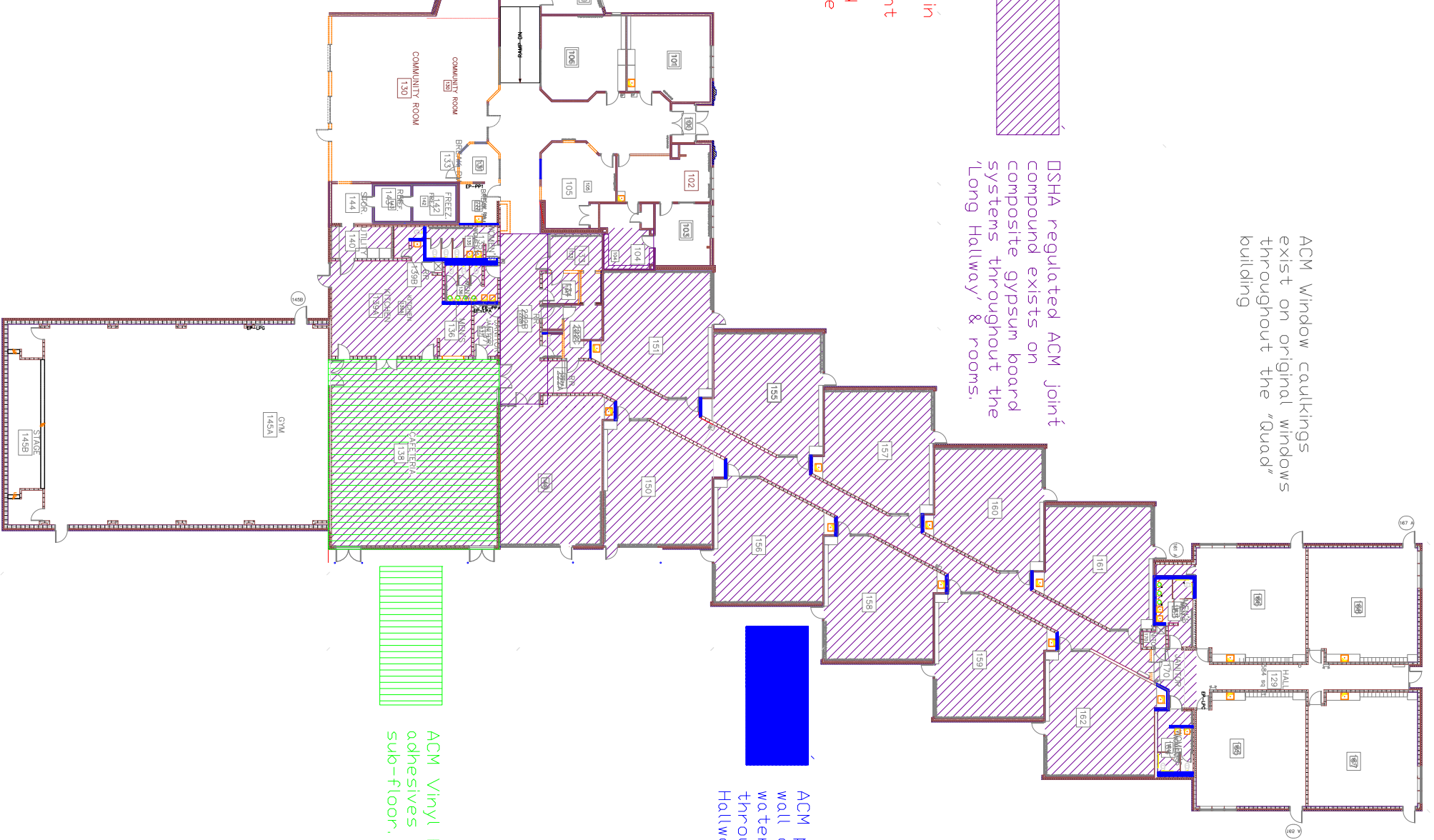
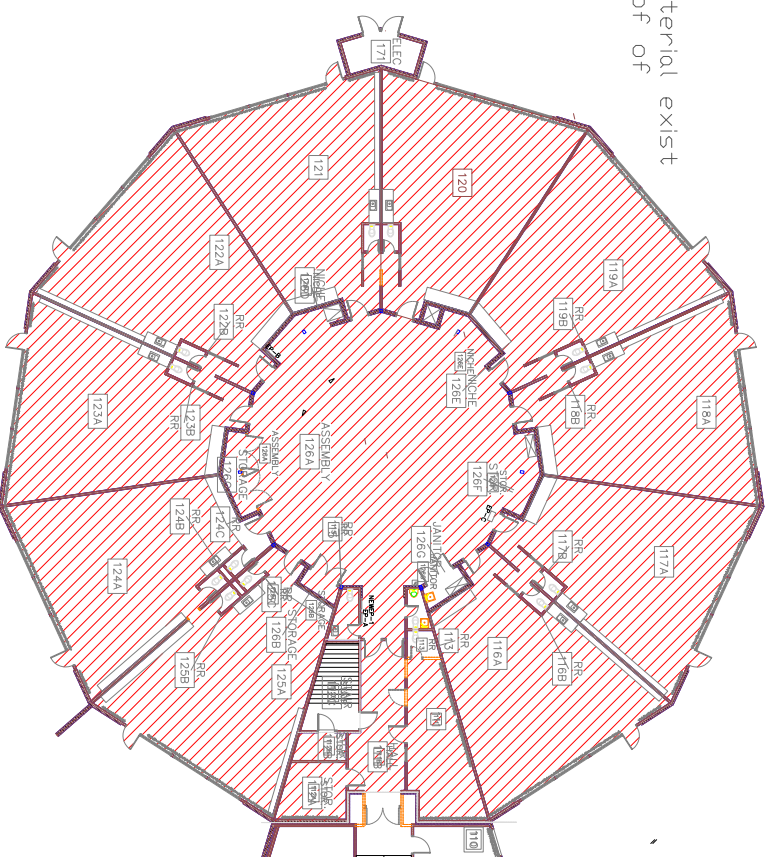


ACM Window caulking exist on original windows throughout the "Quad" building

DSHA regulated ACM joint compound exists on composite gypsum board systems throughout the 'Long Hallway' & rooms.

ACM pipe fittings exist in wall and ceiling cavities. DSHA regulated ACM joint compound exists on composite gypsum board systems throughout the Round Building.

ACM Roofing Material exist throughout roof of 'Round Building'.



ACM pipe fittings exist in wall cavities supplying water fixtures throughout the 'Long Hallway' & rooms.

ACM Vinyl Floor tile and adhesives exist under sub-floor.